



2011 GMC CANYON

GMC CANYON IS THE MIDSIZE TRUCK ENGINEERED WITH THE CAPACITY AND VERSATILITY YOU NEED, WITHOUT THE EXCESS YOU DON'T. IT OFFERS YOU THE BEST-IN-CLASS STANDARD FOUR-CYLINDER HORSEPOWER AND UNSURPASSED FUEL ECONOMY,¹ AVAILABLE SEATING FOR UP TO SIX AND EVEN AN AVAILABLE 300-HORSEPOWER V-8 ENGINE WITH TRAILERING CAPACITY OF UP TO 6000 LBS.² WE GAVE CANYON ALL THESE FEATURES BECAUSE WE BELIEVE ONE TRUCK CAN DO MORE FOR YOU. IT'S WHAT HAPPENS WHEN OUR ENGINEERS NEVER SAY NEVER.

GMC. WE ARE PROFESSIONAL GRADE.

**ENGINEERED FOR ALL THE
DIMENSIONS OF YOUR LIFE.**



¹EPA-estimated mpg: 2WD with 2.9L I-4 engine, 18/25; 2WD with 3.7L I-5 engine, 17/23; 2WD with 5.3L V-8 engine, 14/20. Based on the 2010 GM Mid Pickup segment. ²Maximum trailer weight ratings are calculated assuming a base vehicle, except for any option(s) necessary to achieve the rating, plus driver. The weight of other optional equipment, passengers and cargo will reduce the maximum trailer weight your vehicle can tow. See your GMC dealer for details.



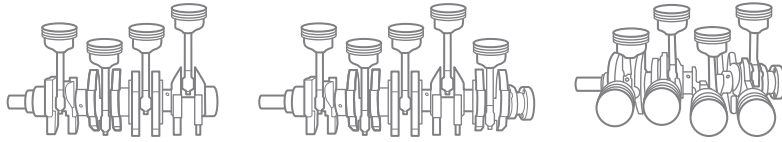
CANYON CREW CAB IN MERLOT JEWEL METALLIC (L)
CANYON EXTENDED CAB IN PURE SILVER METALLIC (C)
CANYON REGULAR CAB IN NAVY BLUE (R)
ALL SHOWN WITH AVAILABLE EQUIPMENT

CHOICE IS POWER.

For the right level of performance and efficiency to meet your needs, Canyon offers a family of Vortec engines. Each features a cylinder head design that swirls and tumbles the intake charge for even, complete combustion. Together with Variable Valve Timing (VVT), their design provides smooth idling, impressive fuel economy¹ and near-peak torque levels over an extended RPM range.

FIGURE 1: THREE LEVELS OF VORTEC POWER

VORTEC 2.9L I-4 VVT	VORTEC 3.7L I-5 VVT	VORTEC 5.3L V-8 VVT
185 HP @ 5600 RPM	242 HP @ 5600 RPM	300 HP @ 5200 RPM
190 LB-FT OF TORQUE @ 2800 RPM	242 LB-FT OF TORQUE @ 4600 RPM	320 LB-FT OF TORQUE @ 3600 RPM



Choosing the right power for the way you want to use your Canyon is easy. Its engines are available in four-, five- and eight-cylinder configurations, stepping up in power while retaining smooth, quiet, efficient operation. In fact, the standard 185-horsepower I-4 engine offers EPA-estimated 25 mpg hwy. No other competitor offers more power with that much efficiency.²

AVAILABLE V-8 PERFORMANCE

To give you strong, predictable response for trailering, passing or off-road use, the available Vortec 5.3L V-8 VVT engine offers you 300 horsepower and 320 lb-ft of torque. This helps give Canyon up to 6000 lbs of trailering capacity³ and the muscle to handle a lot of tasks that might otherwise require a full-size truck.

SMART STARTS

Thanks to VVT technology and careful tuning, the 2.9L and 3.7L Vortec engines operate so quietly, we developed an “intelligent start” feature. This feature senses when the engine is already running and locks out the starter to prevent potential damage if you try to engage it.

¹EPA-estimated mpg: 2WD with 2.9L I-4 engine, 18/25; 2WD with 3.7L I-5 engine, 17/23; 2WD with 5.3L V-8 engine, 14/20. ²Based on the 2010 GM Mid Pickup segment. ³Maximum trailer weight ratings are calculated assuming a base vehicle, except for any option(s) necessary to achieve the rating, plus driver. The weight of other optional equipment, passengers and cargo will reduce the maximum trailer weight your vehicle can tow. See your GMC dealer for more information. ⁴Visit onstar.com for details and system limitations.

AIRCRAFT-GRADE METALLURGY

For low weight and high strength, the engine blocks and cylinder heads of both the Vortec 2.9L I-4 and 3.7L I-5 engines are crafted from aircraft-grade aluminum. This material provides for an extremely light engine that is also very rugged.

MONTHLY UPDATES FROM ONSTAR

To know the condition of your Canyon and its vital systems, just check your e-mail. The standard six-month trial subscription to OnStar Directions & Connections Plan⁴ included with your Canyon also offers you OnStar Vehicle Diagnostics (OVD). Every month, OVD can automatically send you an e-mail summary of hundreds of checks of your engine, antilock brakes and more. You can share this information with your GMC dealer to choose the service you need to keep your Canyon in peak condition.



VORTEC 3.7L I-5



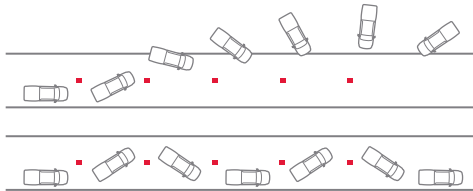
CANYON IN NAVY BLUE SHOWN WITH AVAILABLE EQUIPMENT

RIDE AND HANDLING

NOW IT'S YOUR TURN.

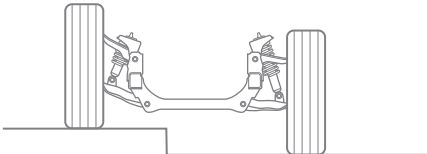
Canyon is engineered to be fun to drive with the capability you expect from GMC. With its bold, wide stance, precise steering and a variety of available engines, Canyon is comfortable and easy to handle in daily driving, and just as ready to reward you when the road offers you a challenge.

FIGURE 2: STANDARD STABILITRAK



For added control and confidence in difficult driving situations, every Canyon model is equipped with the Stabilitrak stability control system. If the system senses your vehicle is not responding adequately to your steering input, it adjusts engine torque and brake pressure to any individual wheel to help you keep on track.

FIGURE 3: THREE SUSPENSION CHOICES



From work to recreation, and all the places in between, Canyon can help you make the most of your opportunities. That's why we offer three suspension choices with a range of capabilities. You can choose the standard Z85 Heavy-Duty for daily work use, ZQ8 Sport for performance driving or Z71 High-Stance for serious off-road capability. (See page 12 for more details.)

TAKE MORE WITH YOU

Canyon is the midsize truck engineered to handle your trailering challenges. The standard 2.9L I-4 VVT can pull up to 3400 lbs¹, about the weight of a single-axle trailer holding a pair of jet skis or dirt bikes.

ONE SPRING FOR MANY LOADS

To give you a smooth, controlled ride when loaded or unloaded, Canyon features two-stage leaf springs. When the truck is lightly loaded, you ride mainly on the compliant first stage. As you add payload, the stronger second stage progressively shoulders the load.

LOCK UP MORE TRACTION

For greater traction in low-speed situations, Canyon is available with the Eaton® Automatic Locking Rear Differential. When it senses a difference in speed between left and right rear wheels of approximately 100 rpm, the differential locks to turn both rear wheels in unison for added traction.

¹Maximum trailer weight ratings are calculated assuming a base vehicle, except for any option(s) necessary to achieve the rating, plus driver. The weight of other optional equipment, passengers and cargo will reduce the maximum trailer weight your vehicle can tow. See your GMC dealer for more information.







CANYON SLT CREW CAB EBONY INTERIOR SHOWN WITH AVAILABLE EQUIPMENT

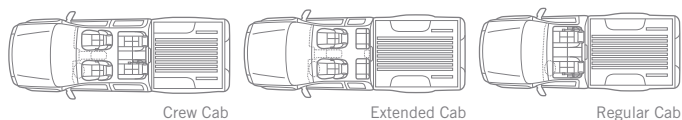


INTERIOR FEATURES AND CONFIGURATIONS

COMFORT FOR YOUR ENTIRE CREW.

Canyon's interior is designed to be spacious, quiet, comfortable and convenient. An artful blend of function and style, the driver-focused design offers fingertip control of the interior environment, while the chrome accents lend a distinctive, finished look.

FIGURE 4: SEATING FOR UP TO SIX



Canyon is the midsize pickup that thinks big on the inside. In the SLE Crew Cab model, Canyon offers seating for six, with a comfortable three-across bench in back and a 60/40 split-bench seat in front. Choose the available SLT Crew Cab model and you get seating for five, with supportive, leather-appointed front bucket seats and a convenient storage console. Canyon Regular and Extended Cab models feature a standard 60/40 split front seat with seating for three adults.

AVAILABLE HEATED SEATS

For faster warming in cold weather, the Canyon SLT Crew Cab offers heated, power-adjustable front bucket seats and rear-seat heat ducts. They help all of your passengers get comfortable and stay that way.

PERSONAL AUDIO LINK (PAL)

Completely personalized sound is available at the touch of a radio button with the PAL. It lets you connect your iPod® to your Canyon's audio system while it is securely stored in the glove box. The PAL provides full functionality of your iPod, allowing you to select artist, album, genre and play lists, as well as listen to audio books and podcasts, using the vehicle's radio controls. Your iPod is even charged while connected to the PAL, so it's ready to go when you are. Available fall 2010. Ask your GMC dealer for details.

ONSTAR DIRECTIONS & CONNECTIONS

OnStar Turn-by-Turn Navigation¹ is included with your six-month trial subscription to OnStar Directions & Connections. With Turn-by-Turn, one touch connects you with an Advisor who can download driving directions to your vehicle. For complete OnStar details, see page 17 or visit onstar.com.

XM RADIO²

XM Radio offers clear coast-to-coast reception and a choice of 170+ channels. It gives you the best in music, sports, talk and more, with over 100 commercial-free stations, for enjoyment through your entire journey. XM is standard with a 3-month trial subscription in all Canyons except WT models.

CONNECT WITH BLUETOOTH^{®3}

The convenience of linking your Bluetooth-enabled phone to Canyon's hands-free calling capability is standard. The in-vehicle Bluetooth system allows users with a Bluetooth-enabled cell phone to make and receive hands-free phone calls utilizing the vehicle's audio system, microphone and controls.

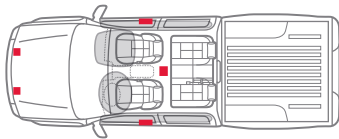
¹Visit onstar.com for coverage map, details and system limitations.
²XM Radio requires a subscription, sold separately by XM after the first 90 days. XM Radio U.S. service only available in the 48 contiguous United States and the District of Columbia. For more information, visit xmradio.com.
³Go to gm.com/bluetooth to find out which Bluetooth phones are compatible with the vehicle.

SAFETY FEATURES

ARRANGED FOR YOUR SECURITY.

When you buckle up in Canyon, you're surrounded by advanced safety and security systems designed to protect you before, during and, thanks to OnStar, after a crash. Its high-strength steel frame works with the cab's safety cage design to manage crash forces and help preserve the integrity of the passenger compartment. The multiple air bag restraints are carefully engineered to supplement the protection provided by the safety belts in frontal and side-impact crashes. It's all there to give you peace of mind before you turn the key.

FIGURE 5: DUAL-STAGE FRONTAL AND HEAD CURTAIN AIR BAGS¹

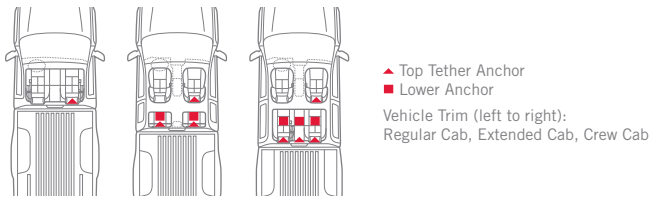


To reduce the risk of injury to the driver and front passenger, dual-stage frontal air bags include a sensor that can gauge the severity of a crash and determine whether to deploy one or two levels of inflation. Canyon also features head curtain side-impact air bags to help protect the driver and outboard front and rear passengers in the event of a crash.

PASSENGER SENSING SYSTEM¹

Canyon features a Passenger Sensing System that can automatically turn the passenger-side air bag on or off in the event of an impending collision, depending on the weight and position of the occupant.

FIGURE 6: SECURING CHILD SAFETY SEATS



Securing an approved child safety seat or booster seat is as simple as a few clicks with the Lower Anchors and Top tethers for CHildren (LATCH) system. Built-in steel anchor rings engage the child seat latches to eliminate installation guesswork and give your approved seat a stable, secure mounting.

HELP IS ON THE WAY

With OnStar,² you can get the help you need, even if you can't ask for it. With OnStar Automatic Crash Response, built-in sensors around your vehicle can automatically send an alert to OnStar. An OnStar Advisor can be immediately connected to your vehicle to see if you need help. Even if you are unable to respond, the Advisor will use advanced GPS technology to pinpoint your exact location to direct emergency help—even in areas with limited cellular reception. The Advisor can also relay critical crash information to emergency responders, such as the severity and type of crash, so the responders are better equipped to treat you at the scene.

¹Air bag inflation can cause severe injury or death to anyone too close to the air bag when it deploys. Be sure every occupant is properly restrained. Always use safety belts and the correct restraint for your child's age and size. Even in vehicles equipped with the Passenger Sensing System, children are safer when properly secured in a rear seat in the appropriate infant, child or booster seat. Never place a rear-facing infant restraint in the front seat of any vehicle equipped with a passenger air bag. See the Owner's Manual and child safety seat instructions for more safety information. ²Visit onstar.com for details and system limitations.







CANYON EXTENDED CAB IN PURE SILVER METALLIC SHOWN WITH Z71 HIGH-STANCE OFF-ROAD SUSPENSION AND AVAILABLE EQUIPMENT



SUSPENSION CONFIGURATIONS

IT SHINES, EVEN IN THE DIRT.

Off-road truck enthusiasts know another world that starts where the pavement ends. And that's the place where the Canyon truly stands out. Not only is it a well-mannered truck for everyday driving; when properly equipped, Canyon is also a powerful and poised off-road vehicle with outstanding capabilities for the adventure-seeking driver.

SHIFT ON THE FLY

It's easy to adapt to changing roads, trails or weather with one-touch Insta-Trac. It's included with the available four-wheel-drive system to let you shift between 2WD and 4WD HI—and back—with the touch of a button. This system lets you select these different drive ranges as often as vehicle speeds and available traction conditions warrant. The 4WD system also allows your Canyon to be dinghy-towed without any additional modification. Just put the shift selector in neutral when you're ready to go.

Z85 HEAVY-DUTY SUSPENSION

To accommodate a wide range of uses and loads, choose the standard Z85 Heavy-Duty Suspension. It includes either an independent front suspension with coil springs in 2WD models, or the proven torsion bar design in 4WD models. This package also includes two-stage rear leaf springs for changing cargo loads.

Z71 HIGH-STANCE OFF-ROAD SUSPENSION

For a rugged off-road look, high stance and maximum off-road capability, choose the available Z71 High-Stance Off-Road Suspension. With a stout torsion bar front suspension and 17-inch chrome-clad wheels, Z71 elevates the Canyon higher than the standard Z85 Heavy-Duty Suspension in both 2WD and 4WD models.

ZQ8 PERFORMANCE SUSPENSION

The available ZQ8 performance suspension for the 5.3L V-8 VLT SLE Extended and Crew Cab models lowers Canyon's ride height by 2 inches, compared to the standard Z85 Heavy-Duty Suspension. The ZQ8 option also includes 18-inch aluminum wheels with a bright aluminum finish. Combined with the wide stance, precise steering and performance tires, this package helps to give Canyon agility without sacrificing utility or capacity.

STANDARD AND AVAILABLE FEATURES/CANYON

TRIM LEVELS	WT REG/EXT	SLE-1 REG/EXT/ CREW	SLT EXT/CREW
MECHANICAL			
ALTERNATOR 125-amp	S	S	S
145-amp on SLE-1, available on Extended and Crew Cab models only. Requires available Vortec 5.3L V-8 engine.	—	A	A
BATTERY Heavy-duty maintenance-free with 590 cold-cranking amps and rundown protection	S	S	S
BRAKES Front disc/rear drum with 4-wheel antilock	S	S	S
EATON AUTOMATIC LOCKING REAR DIFFERENTIAL	A	A	S
ENGINES Vortec 2.9L I-4 Variable Valve Timing (VVT)	S	S	—
Vortec 3.7L I-5 VVT	A	A	S
Vortec 5.3L V-8 VVT	—	A	A
ENGINE BLOCK HEATER	A	A	A
FRONT UNDERBODY SHIELD Standard on 4WD models	S	S	S
STABILITRAK Stability control system	S	S	S
STEERING Power rack-and-pinion	S	S	S
SUSPENSION Front independent; with coil springs, standard on 2WD models only; with torsion bars, standard on 4WD models. Included on 2WD	S	S	S
Extended and Crew Cab SLE-1 and SLT models with ZQ8 Sport Suspension Package or Z71 High-Stance Off-Road Suspension Package and 5.3L V-8 engine. See dealer for details.			
Rear, semifloating axle with 2-stage multi-leaf springs	S	S	S
Z85 Heavy-Duty Suspension Package	S	S	S
ZQ8 Sport Suspension Package. 2WD models only. Not available on Regular Cab models. On SLE-1 models, includes SLE Deluxe Cloth front buckets and Power Convenience Package; on SLE-1 Extended Cab, requires 4-speed automatic transmission. Requires 5.3L V-8 engine.	—	A	A
Z71 High-Stance Off-Road Suspension Package. Includes 4 17" chrome-clad wheels, P265/70R17 on-/off-road blackwall tires, front torsion bars, 28 mm front stabilizer bar, urethane jounce bumpers, large wheel flares and automatic locking rear differential. Requires 3.7L I-5 or 5.3L V-8 engine. Not available on SLE-1 Regular Cab models.	—	A	A
TRAILERING EQUIPMENT Includes trailer hitch and 7-wire harness	A	A	A
TRANSFER CASE Insta-Trac electronic shift with dash-mounted controls on 4WD models. Dinghy-towing capability in 4WD models only.	S	S	S
TRANSMISSIONS 5-speed manual with overdrive. Not available on SLE Crew Cab models.	S	S	—
4-speed automatic, electronically controlled with overdrive. Standard on SLE Crew Cab models.	A	A	S

TRIM LEVELS	WT REG/EXT	SLE-1 REG/EXT/ CREW	SLT EXT/CREW
SEATING			
SEATS SLE Deluxe Cloth front 60/40 split-bench with manual recliners, integral outboard head restraints, armrest with integral storage and dual cupholders	S	S	—
Front 60/40 split-bench with vinyl, integral outboard head restraints and dual cupholders. WT Regular Cab only.	A	—	—
SLE Deluxe Cloth front buckets. Includes integral head restraints, manual recliners, center floor console with storage and armrest. Extended and Crew Cab models only.	—	A	—
Leather-appointed front buckets with 8-way power driver and 6-way power front passenger seat adjusters, heated driver and front passenger seats with power lumbar control and adjustable head restraints	—	—	S
Driver- and passenger-side, forward-facing, flat-folding rear seat, includes rear-seat storage compartment. On WT Extended Cab models, requires Ebony carpeted floor covering. Standard on SLE-1 and SLT Extended Cab models only.	S	S	S
Second-row, flat-folding seats. Crew Cab models only.	—	S	S
INSTRUMENTS AND CONTROLS			
ANALOG INSTRUMENTATION With Driver Information Center	S	S	S
CRUISE CONTROL	S	S	S
STEERING Tilt-Wheel steering column with leather-wrapped steering wheel	S	S	S
WARNING TONES Headlamp on, key-in-ignition, driver safety belt unfasten, turn signal on and critical Driver Information Center Active	S	S	S
INTERIOR DETAILS			
AIR CONDITIONING Single-zone manual	S	S	S
FLOOR COVERING Rubberized vinyl. On WT Extended Cab models, not available with driver- and passenger-side, forward-facing, flat-folding rear seats.	A	—	—
FLOOR MATS Rubberized vinyl front and rear. Requires color-keyed carpeted floor covering.	S	S	S
INTERIOR ACCENTS Chrome finish. Includes door handles, air outlets, accents on front upper door speaker grilles, uplevel instrument cluster bezel and front-door sill plates.	S	S	S
MANUAL WINDOWS AND DOOR LOCKS For driver and front passenger. Not available on Crew Cab models.	S	S	—

TRIM LEVELS	WT REG/EXT	SLE-1 REG/EXT/ CREW	SLT EXT/CREW
MIRRORS Inside rearview with manual day/night adjustment. Not available on Crew Cab or SLT models.	S	S	—
Inside rearview, auto-dimming. With compass and outside temperature display. Standard on SLE-1 Crew Cab models.	A	A	S
POWER CONVENIENCE PACKAGE With power windows, power door locks with lockout protection, outside power-adjustable mirrors, inside rearview auto-dimming mirror with compass and temperature display and remote keyless entry. Standard on SLE-1 Crew Cab models.	A	A	S
WINDOW Rear sliding	A	A	S
ENTERTAINMENT/COMMUNICATION/NAVIGATION			
AM/FM STEREO With seek-and-scan and digital clock. On WT models, upgradeable to AM/FM stereo with CD/MP3 player. On SLE-1 Crew Cab models, requires available Crew Cab Value Option Package.	S	A	—
With CD/MP3 player, seek-and-scan, digital clock, auto-tone control, Radio Data System (RDS), ¹ speed-compensated volume, 4 speakers on Regular Cab models and 6 speakers on Extended and Crew Cab models.	A	S	S
BLUETOOTH FOR PHONE² Personal cell phone connectivity to vehicle audio system for hands-free calling	S	S	S
PERSONAL AUDIO LINK (PAL) Available fall 2010	A	A	A
XM SATELLITE RADIO³ 3 trial months. See page 17 for details.	A	S	S
ONSTAR⁴ Six months of Directions & Connections plan. See page 17 for details.	S	S	S
EXTERIOR STYLING AND FUNCTIONALITY			
APPEARANCE/FUNCTION Ebony air dam, Dark Smoke Gray front fascia, chrome bumpers with Dark Smoke Gray pad on rear step-style bumper	S	S	S
BODYSIDE MOLDINGS Color-keyed; Crew Cab models	—	S	S
FLEETSIDE PICKUP BOX All-welded steel with double-wall construction and corrosion protection with 4 cargo tie-downs and 2-position tailgate	S	S	S

STANDARD AND AVAILABLE FEATURES/CANYON

TRIM LEVELS	WT REG/EXT	SLE-1 REG/EXT/ CREW	SLT EXT/CREW
GLASS Solar-Ray deep-tinted. All windows except light-tinted glass on windshield, driver- and front-passenger side glass.	A	S	S
LIGHTS Front halogen fog lamps	—	S	S
Daytime Running Lamps with automatic exterior lamp control	S	S	S
OUTSIDE MIRRORS Manual-folding, black. On SLE-1, available on Regular and Extended Cab models only. SLE-1 upgradeable to Power Convenience Package.	S	S	—
Power-adjustable, manual-folding, body color. Standard on Crew Cab models.	A	A	S
RECOVERY HOOKS 2 front, frame-mounted; standard on 4WD models. Not available on SLE-1 2WD Regular Cab models. Requires available Z71 High-Stance Off-Road Suspension Package on SLE-1 2WD Extended and Crew Cab models, and SLT 2WD models.	S	S	S
TIRE Compact spare	S	S	S
WHEEL FLARES Front and rear, large, body-color. Requires Z71 High-Stance Off-Road Suspension Package. Not available on Regular Cab models.	—	A	A
WIPERS Front intermittent, with washers	S	S	S

SAFETY AND SECURITY

AIR BAGS⁵ Frontal, driver and right-front passenger with Passenger Sensing System	S	S	S
Front and rear head curtain side-impact air bags with Passenger Sensing System, outboard seating positions	S	S	S
TIRE PRESSURE MONITOR (Does not monitor spare)	S	S	S
VEHICLE THEFT-DETERRENT SYSTEM With PASSLock	S	S	S

¹RDS functions only where stations broadcast RDS information.
²Go to gm.com/bluetooth to find out which Bluetooth phones are compatible with the vehicle.
³XM Radio requires a subscription, sold separately by XM after the first 90 days. XM Radio U.S. service only available in the 48 contiguous United States and the District of Columbia. For more information, visit xmradio.com.
⁴Visit onstar.com for details and system limitations.
⁵Always use safety belts and the correct restraint for your child's age and size. Even in vehicles equipped with the Passenger Sensing System, children are safer when properly secured in a rear seat in the appropriate infant, child or booster seat. Never place a rear-facing infant restraint in the front seat of any vehicle equipped with a passenger air bag. See the Owner's Manual and child safety seat instructions for more safety information.
⁶Use only GM-approved tire and wheel combinations. For approved tire and wheel combinations and other important information, go to gmaccessorieszone.com or see your dealer for details.
⁷With 5.3L V-8 and Z71 High-Stance Off-Road Suspension Package, 2WD models get 3.73 rear axle ratio; 4WD models get 4.10 rear axle ratio.

WHEEL AVAILABILITY⁶



CAB STYLE:	REGULAR CAB		EXTENDED CAB			CREW CAB		
DRIVETRAIN:	2WD	4WD	2WD	4WD	2WD/Z85/V-8 ⁷	2WD	4WD	2WD/Z85/V-8 ⁷
Z85 SUSPENSION PACKAGE								
WT Standard	PP4	PP3	PP4	PP3	—	—	—	—
SLE Standard	PP2	PP1	PP2	PP1	PP1	PP2	PP1	PP1
SLE Available	RP1	R02	RP1	R02	R02	RP1	R02	R02
SLT Standard	—	—	PP2	PP1	PP1	PP2	PP1	PP1
SLT Available	—	—	RP1	R02	R02	RP1	R02	R02
Z71 SUSPENSION PACKAGE								
SLE Standard	—	—	R03	R03	—	R03	R03	—
SLT Standard	—	—	R03	R03	—	R03	R03	—
ZQ8 SUSPENSION PACKAGE								
SLE Standard	—	—	P67	—	—	P67	—	—
SLT Standard	—	—	P67	—	—	P67	—	—
FRONT SUSPENSION:	REGULAR CAB		EXTENDED CAB		CREW CAB			
	2WD	4WD	2WD	4WD	2WD	4WD		
AXLE CAPACITY	2633	2850	2633	2850	2633	2850		
SPRING CAPACITY	2633	2850	2633	2850	2633	2850		
REAR SUSPENSION: Semifloating axle with two-stage multileaf springs								
AXLE CAPACITY	2900	2900	2900	2900	2900	2900		
SPRING CAPACITY	2900	2900	2900	2900	2900	2900		

Z85 Heavy-Duty 2WD: Independent coil springs; 4WD: Independent torsion bar with stabilizer bar;
 Z71 High-Stance Off-Road 2WD & 4WD: Independent torsion bar with stabilizer bar

GMC CANYON

GMC ACCESSORIES

Make Canyon your very own with available accessories created specifically to match its distinctive style, as well as yours. All of these items have been tested to meet GMC's original equipment standards for performance and appearance. Their cost can be applied to your purchase, installed by your GMC dealer and covered under GM's New-Vehicle Limited Warranty.¹ Just ask your dealer.

FIGURE 1: SOFT TONNEAU COVER



An aluminum frame securely attaches the cover to the bed. An ingenious clamp system lets you open the tailgate with the cover on.

FIGURE 2: FENDER FLARES



Custom-molded design gives your Canyon a more aggressive appearance. Available in select body colors as well as a textured gray finish.

FIGURE 3: SPLASH GUARDS



Accent the exterior of your Canyon with these molded splash guards. They feature the GMC logo and are available in Dark Smoke Gray.

FIGURE 4: EXHAUST TIP



This stainless steel, dual-wall, angle-cut, highly polished exhaust tip will add a performance look to your Canyon's original equipment exhaust system.

FIGURE 5: BED EXTENDER



Stretch the capacity of your cargo bed with this bed extender. Compatible with bedliners and tonneau covers, it swings out to provide additional functional length over an open tailgate, or swings in to create a contained cargo area.²

FIGURE 6: MOLDED ASSIST STEPS



These sturdy, corrosion-resistant assist steps are textured on top for added traction as you get in or out of your Canyon.

FIGURE 7: TOOLBOX



Built to last of 0.75 mm diamond-patterned aluminum with a full-length stainless steel hinge, it can handle 250 lbs of stored equipment.²

FIGURE 8: CAT-BACK EXHAUST SYSTEM³



Constructed of T-304 stainless steel and available in two distinctive tunings: Touring gives Canyon a throaty purr while Performance delivers an aggressive growl. A choice of three unique tips, each with the GMC logo, are available separately.

CANYON/SPECIFICATIONS

ENGINES	VORTEC 2.9L I-4 VVT	VORTEC 3.7L I-5 VVT	VORTEC 5.3L V-8 VVT
CAPACITY	2.9 Liters (178 cu. in.)	3.7 Liters (223 cu. in.)	5.3 Liters (325 cu. in.)
BORE AND STROKE (MM)	95.5 x 102.0	95.5 x 102.0	96.0 x 92.0
COMPRESSION RATIO	10:1	10:1	9.9:1
VALVE TRAIN	Double overhead cam, 4 valves per cylinder, VVT	Double overhead cam, 4 valves per cylinder, VVT	Overhead valve, two valves per cylinder, VVT
FUEL DELIVERY	Sequential fuel injection	Sequential fuel injection	Sequential fuel injection
SAE NET HORSEPOWER @ RPM AUTOMATIC TRANSMISSION	185 @ 5600	242 @ 5600	300 @ 5200
SAE NET TORQUE @ RPM (LB-FT)	190 @ 2800	242 @ 4600	320 @ 4000
FUEL ECONOMY 2011 OFFICIAL EPA-ESTIMATED CITY/HIGHWAY MPG	2WD: 18/25 4WD: 18/24 (manual) 17/23 (automatic)	2WD: 17/23 4WD: 17/23 16/21 (Crew Cab)	2WD: 14/20 4WD: 14/19

TRAILERING SPECS ⁵	MANUAL TRANSMISSION RATINGS WITH BALL HITCH		AUTOMATIC TRANSMISSION RATINGS WITH BALL HITCH		VORTEC 3.7L I-5 VVT		VORTEC 5.3L V-8 VVT ⁴	
	VORTEC 2.9L I-4 VVT AXLE RATIO	MAX. TRAILER WEIGHT (LBS)	VORTEC 2.9L I-4 VVT AXLE RATIO	MAX. TRAILER WEIGHT (LBS)	AXLE RATIO	MAX. TRAILER WEIGHT (LBS)	AXLE RATIO	MAX. TRAILER WEIGHT (LBS)
REGULAR CAB 2WD	3.73	2400	3.73	3400	3.73	4000	—	—
REGULAR CAB 4WD	3.73	2100	3.73	3100	3.73	4000	—	—
EXTENDED CAB 2WD	3.73	2200	3.73	3200	3.73	5500	3.42 / 3.73	6000
EXTENDED CAB 4WD	3.73	1900	3.73	2900	3.73	5500	3.42 / 4.10	6000
CREW CAB 2WD	—	—	3.73	3000	3.73	5500	3.42 / 3.73	6000
CREW CAB 4WD	—	—	—	—	3.73	5500	3.42 / 4.10	6000

ENGINEERED TO DELIVER CAN-DO CAPABILITY IN A VARIETY OF CONFIGURATIONS, CANYON OFFERS A WIDE SELECTION OF CABS, ENGINES, DRIVE-LINES, SUSPENSIONS AND TRIM LEVELS. SELECT THE BLEND OF PRACTICALITY AND FUN FOR YOUR NEEDS AND YOUR BUDGET.

TRIM	REGULAR CAB WT/SLE	EXTENDED CAB WT/SLE/SLT	CREW CAB SLE/SLT
ENGINE	VORTEC 2.9L I-4 VVT VORTEC 3.7L I-5 VVT	VORTEC 2.9L I-4 VVT VORTEC 3.7L I-5 VVT VORTEC 5.3L V-8 VVT	VORTEC 2.9L I-4 VVT VORTEC 3.7L I-5 VVT VORTEC 5.3L V-8 VVT
DRIVETRAIN	TWO-WHEEL DRIVE FOUR-WHEEL DRIVE	TWO-WHEEL DRIVE FOUR-WHEEL DRIVE	TWO-WHEEL DRIVE FOUR-WHEEL DRIVE
5-SPEED MANUAL	S: WT/1SA, SLE-1/3SA (I-4 ONLY)	S: WT/1SA, SLE-1/3SA (I-4 ONLY)	—
4-SPEED AUTOMATIC	A: WT/1SA, SLE-1/3SA (I-5 ONLY)	S: SLT/4SA (I-5) A: WT/1SA, SLE-1/3SA (I-5) A: SLE-1/3SA, SLT/4SA (V-8)	S: SLE-1/3SA 2WD (I-4) SLE-1/3SA 4WD (I-5), SLT 4SA A: SLE-1/3SA 2WD (I-5) A: ALL W/ V-8
SUSPENSION	Z85 HEAVY-DUTY	Z85 HEAVY-DUTY Z71 HIGH-STANCE OFF-ROAD ZQ8 SPORT (REQUIRES V-8)	Z85 HEAVY-DUTY Z71 HIGH-STANCE OFF-ROAD ZQ8 SPORT (REQUIRES V-8)

GROSS COMBINED WEIGHT RATINGS ⁶ (GCWR) Based on engine and rear axle ratio	REAR AXLE RATIO WITH MANUAL TRANSMISSION						REAR AXLE RATIO WITH AUTOMATIC TRANSMISSION							
	6000	7000	8500	9000	9500	9800	10,400	6000	7000	8500	9000	9500	9800	10,400
GROSS COMBINED WEIGHT RATING (LBS)	3.73						3.73							
VORTEC 2.9L I-4 VVT (LLV)	3.73	—	—	—	—	—	3.73	—	—	—	—	—	—	—
VORTEC 3.7L I-5 VVT (LLR)	—	—	3.73	3.73	3.73	3.73	—	—	—	—	—	—	—	—
VORTEC 5.3L V-8 VVT (LH9)	—	—	—	—	—	—	—	—	—	—	—	—	3.42	3.73
													4.10	

STANDARD TECHNICAL DATA	REG CAB 2WD	REG CAB 4WD	EXT CAB 2WD	EXT CAB 4WD	CREW CAB 2WD	CREW CAB 4WD
BRAKES	Front disc/rear drum					
STEERING	Power rack-and-pinion					
FUEL TANK CAPACITY APPROX. GALS	19	19	19	19	19	19
BATTERY COLD-CRANKING AMPS	590	590	590	590	590	590
ALTERNATOR AMPS	125	125	125	125	125	125
GROSS VEHICLE WEIGHT RATING GVWR LBS ⁷	4850	5150	5000	5300	5000	5300
MAXIMUM PAYLOAD CAPACITY LBS ⁸	1429	1410	1665	1366	1418	1263

EXTERIOR DIMENSIONS (INCHES)	REG CAB 2WD	REG CAB 4WD	EXT CAB 2WD	EXT CAB 4WD	CREW CAB 2WD	CREW CAB 4WD
HEIGHT	65.5	67.6	65.5	67.6	65.2	67.9
OVERALL LENGTH	192.4	192.4	207.1	207.1	207.1	207.1
WHEELBASE	111.3	111.3	126	126	126	126
CARGO DIMENSIONS (INCHES)						
WIDTH	67.6	68.6	67.6	68.6	67.6	68.6
INSIDE WIDTH AT FLOOR	57.2	57.2	57.2	57.2	57.2	57.2
BOX LENGTH AT FLOOR	72.8	72.8	72.8	72.8	61.1	61.1

¹GM Accessories permanently installed at the time of new-vehicle delivery are covered under the New-Vehicle Limited Warranty. If installed after delivery, coverage (parts and labor) is for the balance of the new-vehicle warranty or a minimum of 12 months/12,000 miles, whichever comes first. GM Accessories not requiring installation or purchased over the counter carry a 12-month limited warranty (parts only). Does not apply to licensed products. ²Cargo and load capacity limited by weight and distribution. ³A properly installed Cat-Back Exhaust System meets the 95 dbA noise limit some authorities impose on modified exhaust systems. Some states and local rules are more stringent. Check with local authorities to determine if this system meets noise limits where you will register and drive your vehicle. ⁴With 5.3L V-8 and Z71 High-Stance Off-Road Suspension Package, 2WD models get 3.73 rear axle ratio; 4WD models get 4.10 rear axle ratio. ⁵Maximum trailer weight ratings are calculated assuming a base vehicle, except for any option (s) necessary to achieve the rating, plus driver. The weight of other optional equipment, passengers and cargo will reduce the maximum trailer weight your vehicle can tow. See your GMC dealer for details. ⁶When properly equipped; includes weight of the vehicle and trailer combination, including the weight of the driver, passengers, fuel, optional equipment and cargo in the vehicle and trailer. ⁷When properly equipped; includes weight of vehicle, passengers, cargo and equipment. ⁸Maximum payload capacity includes weight of driver, passengers, optional equipment and cargo.

GMC CANYON

COLORS

GRAY-GREEN METALLIC



ONYX BLACK



FIRE RED



NAVY BLUE



SUMMIT WHITE



AQUA BLUE METALLIC (NEW)



MERLOT JEWEL METALLIC



PURE SILVER METALLIC



VINYL



MEDIUM PEWTER VINYL
Available on WT Trim; 60/40 solid bench

DELUXE CLOTH



LIGHT TAN
Standard on SLE-1 Trim; 60/40 split bench or reclining buckets



EBONY
Standard on WT and SLE-1 Trim; 60/40 split bench or reclining buckets


LEATHER-APPOINTED



LIGHT TAN
Standard on Extended and Crew Cab SLT; reclining buckets



EBONY
Standard on Extended and Crew Cab SLT; reclining buckets



AT GMC, MORE IS WHAT WE DO. OUR DEDICATION TO ENGINEERING EXCELLENCE LEADS US TO CONSTANTLY EXAMINE AND REFINE THE IDEAS THAT HELP GIVE YOU MORE CAPABILITY, POWER AND CONTROL.

FOR 2011, WE ARE PROUD TO INTRODUCE THE REDESIGNED GMC SIERRA HD, INCLUDING THE FIRST-EVER DENALI HD, OUR STRONGEST, SMARTEST AND MOST POWERFUL SIERRA PICKUPS EVER, AS WELL AS THE FIRST-EVER GMC ACADIA DENALI.

THESE NEW VEHICLES JOIN THE LEGENDARY GMC SIERRA AND YUKON THAT OFFER THE WIDEST ARRAY OF FULL-SIZE HYBRIDS AVAILABLE, AND THE GMC TERRAIN, WITH BEST-IN-CLASS HIGHWAY FUEL ECONOMY.¹

TOGETHER, THEY SHOW HOW EXPERIENCE AND INNOVATION CAN OVERCOME COMPROMISE. IT'S WHY WE NEVER SAY NEVER.

GMC. WE ARE PROFESSIONAL GRADE.

¹EPA-estimated mpg 32 hwy. Based on 2010 GM Compact SUV-Crossover segment.



ONSTAR

OnStar is a core asset of your Canyon. Benefiting from more than a decade of innovative development, it is both a highly advanced technology—fully integrated within the vehicle—and a warm human service. Standard on all Canyon models are six months of the OnStar Directions & Connections plan, including the convenience of Hands-Free Calling. It also includes Automatic Crash Response (see page 8), Stolen Vehicle Assistance, link to Emergency Services, Roadside Assistance, Remote Door Unlock, OnStar Vehicle Diagnostics, Crisis Assist and Remote Horn and Lights. OnStar services require vehicle electrical system (including battery), wireless service and GPS satellite signals to be available and operating for features to function properly. OnStar acts as a link to existing emergency service providers. Visit onstar.com for coverage maps, details and system limitations. Services vary with conditions.

HANDS-FREE CALLING

OnStar Hands-Free Calling capability is built into your OnStar-equipped Canyon. It's there when your cell phone is unavailable, its battery is low, you can't reach it easily or you left it home or in the office. Your Hands-Free Calling system is the right choice whenever you need an easy way to make and receive calls—at the touch of the phone icon on the rearview mirror. Voice-activated dialing is convenient because you don't have to dial when you are at the wheel. And Hands-Free Calling is reliable because it's specially designed for better reception and fewer dropped calls in areas of limited cellular reception. You are invited to experience the benefits yourself with 30 Hands-Free Calling minutes—on OnStar—during the first two months you drive your Canyon, with no strings attached.

ONSTAR TURN-BY-TURN NAVIGATION

Standard on Canyon models with a six-month trial subscription. The OnStar Directions & Connections plan adds innovative, easy-to-use Turn-by-Turn Navigation plus Information and Convenience Services and Driving Directions. With Turn-by-Turn Navigation, you simply tell the OnStar Advisor your intended destination, and directions will automatically be sent to your Canyon. An automated voice then guides you turn-by-turn until you arrive at your destination. Turn-by-Turn Navigation is further enhanced with eNAV, allowing you to send MapQuest® or Google™ Maps® destinations directly to your vehicle. No need to print out directions; just call them up with simple voice commands.



XM RADIO

On all Canyon models except WT: XM Radio¹ is standard with 3 trial months of service. XM turns your drive on with commercial-free music channels from virtually every genre, artist-dedicated channels, live performances and more. Tune in to live play-by-play from the biggest sports, exclusive entertainment from top personalities, compelling talk, hilarious comedy, world-class news, local traffic and weather and family-friendly programming. Everything worth listening to is now on XM. Visit xmradio.com for details.



GOODWRENCH SERVICE

To help your Canyon live up to its performance promise, GMC Goodwrench Service—found exclusively at your GMC dealer—is there. With all the engineering excellence in Canyon, GM-trained Goodwrench technicians have the expertise to care for all of it.

¹XM Radio requires a subscription, sold separately by XM after the first 90 days. XM Radio U.S. service only available in the 48 contiguous United States and the District of Columbia. For more information, visit xmradio.com.



COMMITMENT PLUS

From the owner orientation—and full tank of gas—you receive when you take possession of your Canyon to the **24-Hour Roadside Assistance, Courtesy Transportation and Travel Benefits**, Commitment Plus is a portfolio of owner privileges that lasts throughout your warranty. For expert product information, Roadside Assistance or other services, call 1-800-GMC-8782.

TRAVEL BENEFITS AND ROADSIDE ASSISTANCE Available around the clock: trip routing service, a program for reimbursement for trip interruption due to necessary warranty repairs, towing, flat tire change, jump-starts and more for 5 years or 100,000 miles (whichever comes first).

COURTESY TRANSPORTATION Available at participating dealers: shuttle service, reimbursement of certain public transportation or fuel expenses for overnight warranty repairs, and courtesy rental for overnight work repairs. See your dealer for details.

GMC OWNER CENTER A complimentary, one-stop resource to enhance your GMC ownership experience. It's easy to sign up. Just go to gm.com/gmownercenter/gmc.

BEST COVERAGE IN AMERICA Canyon offers the best coverage in America. That means you get all the benefits of Commitment Plus, including Roadside Assistance and Courtesy Transportation. In addition, you get a new level of confidence with GM's 5-Year/100,000-Mile Transferable Powertrain Limited Warranty. Whichever comes first. See GMC dealer for details.

A NOTE ON CHILD SAFETY Always use safety belts and the correct restraint for your child's age and size. Even in vehicles equipped with the Passenger Sensing System, children are safer when properly secured in a rear seat in the appropriate infant, child or booster seat. Never place a rear-facing infant restraint in the front seat of any vehicle equipped with a passenger air bag. See the Owner's Manual and child safety seat instructions for more safety information.

TRAILERING AND OFF-ROAD INFORMATION Please carefully review the Owner's Manual for important safety information about trailering or off-road driving in your vehicle.

IMPORTANT WORDS ABOUT THIS CATALOG We have tried to make this catalog comprehensive and factual. We reserve the right, however, to make changes at any time, without notice, in prices, colors, materials, equipment, specifications, models and availability. Specifications, dimensions, measurements, ratings and other numbers in this catalog and other printed materials provided at the dealership or affixed to vehicles are approximates based upon design and engineering drawings and prototypes and laboratory tests. Your vehicle may differ due to variations in manufacture and equipment. Since some information may have been updated since the time of printing, please check with your GMC dealer for complete details. GMC reserves the right to lengthen or shorten the model year for any product for any reason, or to start and end model years at different times.

FLEET ORDERS Some standard content may be deleted with fleet orders. See dealer for details.

ENGINES GMC products are equipped with engines produced by GM Powertrain or other suppliers to GM worldwide. The engines in GMC products may also be used in other GM makes and models.

GMC.COM See more of Canyon on our Web site: gmc.com/canyon. More photos and information; hot links to related subjects; convenient dealer locator; pricing guide, spec out your own vehicle. Or call 1-800-GMC-8782.

AN IMPORTANT NOTE ABOUT ALTERATIONS AND WARRANTIES Installations or alterations to the original equipment vehicle (or chassis) as distributed by General Motors are not covered by the General Motors New-Vehicle Limited Warranty. The special body company, assembler, equipment installer or upfitter is solely responsible for warranties on the body or equipment and any alterations (or any effect of the alterations) to any of the parts, components, systems or assemblies installed by GM. General Motors is not responsible for the safety or quality of design features, materials or workmanship of any alterations by such suppliers.

NEW-VEHICLE LIMITED WARRANTY All GMC light-duty vehicles come with a fully transferable, no-deductible 5-year/100,000-mile (whichever comes first) Powertrain Limited Warranty. GM vehicles registered in the U.S.A. are also covered for 3 years or 36,000 miles (whichever comes first). Coverage includes tires and towing to your nearest GMC dealership. Repairs will be made to correct any vehicle defect and most warranty repairs will be made at no charge. In addition, rust-through corrosion will be covered for 6 years or 100,000 miles (whichever comes first). See dealer for details.

ASSEMBLY GMC vehicles and their components are assembled or produced by different operating units of General Motors, its subsidiaries or suppliers to GM worldwide. We sometimes find it necessary to produce GMC vehicles with different or differently sourced components than originally scheduled. Since some options may be unavailable when your vehicle is assembled, we suggest that you verify that your vehicle includes the equipment you ordered or, if there are changes, that they are acceptable to you.

GMMOBILITY.COM (1-800-323-9935) GM Mobility offers financial assistance for eligible adaptive equipment to make automotive travel easier for persons with disabilities or special transportation needs. To learn more about special GM Mobility offers, visit gmmobility.com.

GMCARDMEMBERSERVICES.COM Did you know about the family of reward credit cards that can help you get a great deal on a new GM car, light-duty truck, SUV or crossover? With a GM reward card, you accrue earnings on every credit card purchase to use toward the purchase or lease of an eligible new GM vehicle. With three cards to choose from, you're sure to find one that suits you.

©2010 General Motors. All rights reserved. GM, the GM logo, GMC, the slogans, emblems, vehicle model names, vehicle body designs and other marks appearing in this catalog are the trademarks and/or service marks of General Motors, its subsidiaries, affiliates or licensors. iPod is a registered trademark of Apple, Inc. Facebook is a registered trademark of Facebook, Inc.



GMC.COM | LEARN MORE ABOUT GMC, AND JOIN THE DIALOGUE ON FACEBOOK (FACEBOOK.COM/GMC)

11GMCCANRC-25

