

2009 GMC ENVOY SPECIFICATIONS
PROFESSIONAL GRADE



ENVOY / STANDARD AND AVAILABLE FEATURES

TRIM LEVELS	SLE	SLT	DENALI
ENGINES ↘			
ENGINE Vortec 4.2L I-6 VVT	S	S	—
ENGINE Vortec 5.3L V-8	—	—	S
MECHANICAL ↘			
ELECTRONIC AUTOTRAC WITH AUTOMATIC 4WD Panel-mounted electronic controls. 4WD models only.	S	S	S
EATON HEAVY-DUTY LOCKING REAR DIFFERENTIAL	A	A	S
ALUMINIZED STAINLESS STEEL EXHAUST	S	S	S
150-AMP ALTERNATOR	S	S	—
145-AMP ALTERNATOR	—	—	S
HEAVY-DUTY MAINTENANCE-FREE BATTERY With 600 cold-cranking amps	S	S	S
REAR AXLE 3.42 ratio	S	S	S
REAR AXLE 3.73 ratio	A	A	A
4-WHEEL ANTILOCK DISC BRAKES	S	S	S
STABILITRAK STABILITY CONTROL SYSTEM AND TRACTION CONTROL	S	S	S
LUXURY RIDE SUSPENSION PACKAGE Includes high-pressure gas shocks, front and rear urethane jounce bumpers and stabilizer bars	S	S	S
ELECTRONICALLY CONTROLLED AIR SUSPENSION (ECAS) With rear load leveling	—	—	S
HEAVY-DUTY TRAILERING EQUIPMENT Includes trailering hitch platform, 7-wire harness, CHMSL wire and heavy-duty flasher	S	S	S
ENGINE BLOCK HEATER 4WD models only	A	A	A
ENGINE OIL LIFE INDICATOR	S	S	S
TOOLS Mechanical jack, wheel wrench, spare tire (full size) and hoist	A	S	S
TIRE INFLATOR KIT	S	—	—
SEATING ↘			
FRONT BUCKET DELUXE CLOTH SEATS With adjustable head restraints, 8-way power driver with power lumbar support, power recline and front-passenger manual recline	S	—	—
FRONT BUCKET LEATHER-APPOINTED SEATS With adjustable head restraints, driver with power lumbar support, power recline and 8-way power driver and front-passenger seat adjusters	—	S	—
FRONT BUCKET SEATS WITH LEATHER SEATING SURFACES Driver and front-passenger power lumbar support, power recline, adjustable head restraints and 8-way power driver and front-passenger seat adjusters	—	—	S
HEATED SEATS Driver and front passenger	—	S	S
DRIVER 2-POSITION MEMORY SEAT ADJUSTER	—	S	S
POWER FRONT-PASSENGER SEAT ADJUSTER 8-way	—	S	S
60/40 SPLIT-FOLDING REAR SEATS	S	S	S

A _ AVAILABLE S _ STANDARD — _ NOT AVAILABLE

	SLE	SLT	DENALI
INSTRUMENTATION AND CONTROLS ↘			
DRIVER INFORMATION CENTER Monitors different systems and includes trip computer, fluid levels and door ajar	—	S	S
LEATHER-WRAPPED STEERING WHEEL With theft-deterrent locking feature	S	—	—
LEATHER-WRAPPED STEERING WHEEL With mounted audio and Driver Information Center controls. Includes theft-deterrent locking feature.	—	S	—
LEATHER-WRAPPED STEERING WHEEL With wood trim, mounted audio and Driver Information Center controls. Includes theft-deterrent locking feature.	—	—	S
TILT-ADJUSTABLE STEERING COLUMN With brake/transmission shift interlock	S	S	S
ELECTRONIC CRUISE CONTROL With set and resume speed	S	S	S
POWER-ADJUSTABLE PEDALS Brake and accelerator	A	A	S
INTERIOR DETAILS ↘			
AUTO-DIMMING INSIDE REARVIEW MIRROR With compass and outside temperature display	S	—	—
AUTO-DIMMING INSIDE REARVIEW MIRROR With 8-point compass display	—	S	S
DRIVER AND FRONT-PASSENGER VISORS With illuminated vanity mirrors, padded with cloth trim, color-keyed	S	S	S
OVERHEAD CUSTOM CONSOLE	S	S	S
FLOOR CONSOLE WITH CD STORAGE	S	S	S
FRONT AND REAR FLOOR MATS Color-keyed, carpeted	S	S	S
IN-FLOOR CARGO TIE-DOWNS 5, located in the rear compartment	S	S	S
CARGO CONVENIENCE PACKAGE Includes rear reversible cargo mat, rear cargo net and rear retractable cargo shade	A	A	S
DUAL-ZONE MANUAL AIR CONDITIONING With individual climate control settings for driver and front passenger	S	—	—
DUAL-ZONE AUTOMATIC AIR CONDITIONING With individual climate control settings for driver and front passenger and outside temperature display	—	S	S
ELECTRIC REAR-WINDOW DEFOGGER	S	S	S
HEATER AND DEFOGGER With front and side front door window defoggers and rear-passenger heating ducts	S	S	S
POWER WINDOWS With driver and front-passenger express-down and driver lockout	S	S	S
POWER SUNROOF With express-open	A	A	A
POWER DOOR LOCKS	S	S	S
KEYLESS REMOTE ENTRY	S	S	S
UNIVERSAL HOME REMOTE 3-channel programmable, includes garage door opener	S	S	S

TRIM LEVELS

SLE
SLT
DENALIENVOY PACKAGES 

	SLE	SLT	DENALI
SUN AND SOUND PACKAGE Includes power sunroof and Bose® premium speaker system	A	—	—
SUN AND 6-DISC CD PACKAGE Includes power sunroof and AM/FM stereo with 6-disc CD changer. AM/FM stereo with 6-disc CD changer may be substituted with AM/FM stereo with CD player and Touch-Screen Navigation.*	—	A	A

ENTERTAINMENT / COMMUNICATIONS / NAVIGATION 

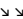
	SLE	SLT	DENALI
AM/FM STEREO WITH CD PLAYER Seek-and-scan, digital clock, auto-tone control, Radio Data System (RDS),** speed-compensated volume, TheftLock and 6 speakers. On SLT and Denali models, may be substituted with AM/FM stereo with 6-disc in-dash CD changer or AM/FM stereo with CD player and Touch-Screen Navigation.*	S	S	S
AM/FM STEREO WITH 6-DISC CD PLAYER Seek-and-scan, digital clock, auto-tone control, RDS,** speed-compensated volume, TheftLock and 6 speakers. On SLT and Denali models, included when Sun and 6-disc CD Package is ordered.	—	A	A
TOUCH-SCREEN NAVIGATION* AM/FM stereo with CD player, seek-and-scan, auto-tone control, RDS,** full-feature autonomous touch-screen DVD-based navigation and 6 speakers	—	A	A
BOSE PREMIUM SPEAKER SYSTEM	A	S	S
REAR AUDIO SYSTEM CONTROLS With headphone jacks (headphones not included)	—	S	S
REAR-SEAT ENTERTAINMENT SYSTEM Includes DVD player with screen and 2 wireless headphones/controls	A	A	A
XM RADIO† XM Radio is standard, including 3 trial months of service. XM turns your world on with commercial-free music channels for virtually every music genre, all in amazing digital-quality sound. Turn on your favorite sports, including every Major League Baseball® game, plus the biggest names in news, talk, comedy and family programming, wherever you go from coast to coast. Find out what turns you on.	S	S	S
ONSTAR†† With one year of the Safe & Sound plan. Includes Automatic Crash Response, Stolen Vehicle Location Assistance, link to Emergency Services, Roadside Assistance, Remote Door Unlock, OnStar Vehicle Diagnostics, Hands-Free Calling, Crisis Assist and Remote Horn and Lights.	S	S	S
BLUETOOTH® FOR PHONE*	—	S	S

EXTERIOR STYLING AND FUNCTIONALITY 

	SLE	SLT	DENALI
DUAL HALOGEN COMPOSITE HEADLAMPS With automatic exterior lamp control and flash-to-pass	S	S	S
DAYTIME RUNNING LAMPS	S	S	S
FOG LAMPS Front halogen	S	S	S
CORNERING LAMPS	S	S	S
HEADLAMP WASHER	—	S	S
FRONT AND REAR INTERMITTENT WIPERS With washers	S	S	S

SLE
SLT
DENALI

	SLE	SLT	DENALI
ASSIST STEPS Black	A	A	—
ASSIST STEPS Color-keyed, Denali specific	—	—	S
FRONT AND REAR FASCIAS Color-keyed, rear step includes pad	S	S	—
FRONT AND REAR FASCIAS Denali specific	—	—	S
GRILLE Body-color with bright trim and chrome accents	S	S	—
GRILLE Bright honeycomb	—	—	S
BODYSIDE MOLDINGS Chrome	S	S	—
BODYSIDE MOLDINGS Body-color, Denali specific	—	—	S
MIRRORS Solar-Ray deep-tinted glass	S	S	S
MIRRORS Heated, power-adjustable, manual-folding outside	S	—	—
MIRRORS Heated, power-adjustable, manual-folding outside with integrated turn signal. Body-color on Denali.	—	S	S
LIFTGATE With liftglass, electric release and rear-window wiper/washer	S	S	S
LUGGAGE RACK Black, roof-mounted, adjustable with center rails	S	S	S

SAFETY AND SECURITY 

	SLE	SLT	DENALI
FRONT AIR BAGS With Passenger Sensing System**	S	S	S
FRONT AND REAR OUTBOARD HEAD CURTAIN SIDE-IMPACT AIR BAGS**	S	S	S
VEHICLE THEFT-DETERRENT ALARM SYSTEM	—	S	S
VEHICLE THEFT-DETERRENT SYSTEM With PASSLock	S	S	S
TIRE PRESSURE MONITORING SYSTEM (Does not monitor spare)	S	S	S

*Touch-Screen Navigation is not available in Alaska, Puerto Rico or the Virgin Islands.

**RDS functions only where stations broadcast RDS information.

†XM is available only in the 48 contiguous United States. Required \$12.95 monthly subscription sold separately after 3 trial months. All fees and programming subject to change. Subscription subject to customer agreement. Visit gm.xmradio.com for more details.

††OnStar services require vehicle electrical system (including battery), wireless services and GPS satellite signals to be available and operating for features to function properly. OnStar acts as a link to existing emergency service providers. Stolen Vehicle Location Assistance and Remote Door Unlock success vary with conditions. Diagnostic capability varies by model. Call 1-888-4ONSTAR (466-7827) or visit onstar.com for details and system limitations. Hands-Free Calling requires existing OnStar service contract and prepaid minutes or enrollment in a shared minutes plan. Not available in certain markets. Calls may be made to U.S. and Canada only.

*Go to gm.com/bluetooth to find out which Bluetooth phones are compatible with the vehicle.

**A note about child safety: Always use safety belts and the correct restraint for your child's age and size. Even in vehicles equipped with the Passenger Sensing System, children are safer when properly secured in a rear seat in the appropriate infant, child or booster seat. Never place a rear-facing infant restraint in the front seat of any vehicle equipped with a passenger air bag. See the Owner's Manual and Child Safety Seat Instructions for more safety information.

ENGINE >>

VORTEC 4.2L I-6 INLINE 6-CYLINDER

Capacity	4.2L
Bore and stroke (inches)	93 x 102
Compression ratio	10.3:1
Valve train	Double-Overhead Cam with four valves per cylinder
Fuel delivery	Sequential fuel injection
SAE net horsepower @ rpm	285 @ 6000
SAE net torque @ rpm (lb-ft)	276 @ 4600
Transmission	4L60 Hydra-Matic 4-speed automatic with overdrive
Drive	2WD 4WD with Autotrac (available)

VORTEC 5.3L V-8

Capacity	5.3L
Bore and stroke (inches)	96 x 92
Compression ratio	9.9:1
Valve train	Overhead valve with two valves per cylinder
Fuel delivery	Sequential fuel injection
SAE net horsepower @ rpm	300 @ 5300
SAE net torque @ rpm (lb-ft)	321 @ 4000
Transmission	4L60 Hydra-Matic 4-speed automatic with overdrive
Drive	2WD 4WD with Autotrac (available)

EPA-ESTIMATED MPG >>

VORTEC 4.2L I-6	Envoy 2WD	14 city/20 hwy.
	Envoy 4WD	14 city/20 hwy.
VORTEC 5.3L V-8	Envoy Denali 2WD	15 city/21 hwy.
	Envoy Denali 4WD	14 city/20 hwy.

STANDARD TECHNICAL DATA >>

Brakes	Vented 4-wheel discs with Antilock Braking System (ABS)
Steering	Hydraulic power-assist rack-and-pinion system
Fuel tank capacity (approx. gal.)	22
Battery (cold-cranking amps)	ACDelco Freedom (600)
Alternator (amps): Envoy / Envoy Denali	150/145

GROSS VEHICLE WEIGHT RATING* (GVWR) >>

Envoy (2WD/4WD)	5,550 lbs / 5,750 lbs
Envoy Denali (2WD/4WD)	6,001 lbs / 6,001 lbs

TRAILERING DATA** >>

VORTEC 4.2L I-6 INLINE 6-CYLINDER — ENVOY

Max. trailer weight / 3.42 Axle Ratio (2WD/4WD)	5,300 lbs / 5,200 lbs
Max. trailer weight / 3.73 Axle Ratio (2WD/4WD)	5,800 lbs / 5,700 lbs

VORTEC 5.3L V-8 / ENVOY DENALI ONLY

Max. trailer weight / 3.42 Axle Ratio (2WD/4WD)	6,100 lbs / 6,000 lbs
Max. trailer weight / 3.73 Axle Ratio (2WD/4WD)	6,600 lbs / 6,500 lbs

EXTERIOR DIMENSIONS (INCHES) >>

Overall height	71.9
Overall width	74.7
Overall length	191.6
Wheelbase	113.0

CARGO AREA DIMENSIONS >>

Maximum volume	80 cu. ft. ¹
Cargo floor length (behind first-row seats)	70.0"
Inside cargo width (between wheel housing)	46.1"

*When properly equipped; includes weight of vehicle, passengers, cargo and equipment.

**Maximum trailer weight ratings are calculated assuming a base vehicle, except for any options necessary to achieve the rating, plus driver. The weight of optional equipment, passengers, cargo and required trailering equipment will reduce the maximum trailer weight your vehicle can tow. See your dealer for details.

¹Cargo and load capacity limited by weight and distribution.

^{††}Use only GM-approved tire and wheel combinations. For important tire and wheel information, go to gmaccessorieszone.com or see your dealer for details.

ENVOY WHEELS^{††}



N80
 □ 17"
 □ POLISHED ALUMINUM
 □ STANDARD: SLE



N87
 □ 18"
 □ HIGH-POLISHED ALUMINUM
 □ STANDARD: SLT

ENVOY DENALI WHEEL



QF8
 □ 18"
 □ POLISHED ALUMINUM
 □ STANDARD: DENALI

EXTERIOR COLOR



DARK CRIMSON METALLIC*



MIDNIGHT BLUE METALLIC*



RED JEWEL TINTCOAT EXTRA-COST COLOR



SILVER GREEN METALLIC*



SAND BEIGE METALLIC



STEEL GRAY METALLIC



CARBON BLACK METALLIC EXTRA-COST COLOR



QUICKSILVER METALLIC

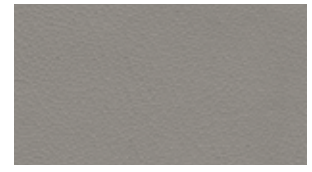


ONYX BLACK

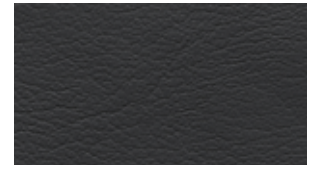


SUMMIT WHITE

INTERIOR TRIM / LEATHER

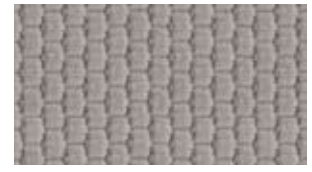


LIGHT GRAY



EBONY

INTERIOR TRIM / CLOTH



LIGHT GRAY*



EBONY*

*Not available on Envoy Denali.



THREE POWERFUL BRANDS UNDER ONE ROOF

BUICK. GMC. PONTIAC. THREE DISTINCT BRANDS COMING TOGETHER TO CREATE THE ULTIMATE COLLECTION OF LUXURY, CAPABILITY AND PERFORMANCE. ONE SHOWROOM OFFERING AN UNPRECEDENTED CHOICE OF CARS, TRUCKS, CROSSOVERS AND SUVs.

—

ENTER AND DISCOVER WHAT IT MEANS TO DRIVE BEAUTIFUL IN THE BUICK LUCERNE, A MORE INTELLIGENT LUXURY SEDAN. LEARN THE REWARD FOR NEVER SAYING NEVER: THE GMC ACADIA, WITH BETTER HIGHWAY FUEL ECONOMY THAN ANY OTHER EIGHT-PASSENGER SUV.* OR REKINDLE YOUR LOVE FOR CAR BEHIND THE WHEEL OF THE FIRST-EVER PONTIAC G8 SEDAN, A GAME-CHANGING COMBINATION OF POWER AND PERFORMANCE.

—

EACH BRAND HAS A UNIQUE HERITAGE AND UNWAVERING PURPOSE. TOGETHER, THEY HAVE A SINGULAR FOCUS: TO CREATE THE ULTIMATE DESTINATION TO FIND YOUR PERFECT VEHICLE NOW, AND IN THE FUTURE.

—

—