



XLE V6 shown in Lunar Mist Metallic



SE V6 shown in Salsa Red Pearl with available rear spoiler



Camry Standard shown in Phantom Gray Pearl



LE shown in Mineral Green Opaescent

05 MODEL GRADES

Reward yourself. The benefits of hard work reveal themselves in many ways. Take the 2005 Toyota Camry SE. Its available 3.3-liter VVT-i V6 and standard sport-tuned suspension can take you as far as you want to go in life with a smile on your face. Or the Camry XLE. With all its refinement, it lets everybody know you're making a name for yourself. If you want your money to work as hard as you do, the Camry LE is a smart value. Then again, just getting a job can be worth noting. The Camry Standard is a sweet reward for becoming gainfully employed.



XLE V6 interior shown in Stone leather with available touch-screen DVD navigation system¹

05 INTERIORS

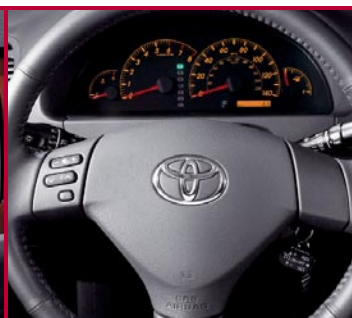
Complete luxury, ahead of schedule and under budget. What did you do to deserve all the comfort of the Camry XLE? You did what you always do. You set your sights and went after it, that's what. So sink into the XLE V6 leather-trimmed interior. Wrap yourself in the automatic climate control and the sound of the JBL 3-in-1 AM/FM Cassette/6-disc in-dash CD changer. Open the moonroof. Check the available touch-screen DVD navigation system! Yeah, you could get used to this.



Available touch-screen DVD navigation system!



XLE's automatic climate control



SE shown with new Optitron meters

1. See Available Packages and Options section footnote 7 for more information on Toyota's DVD navigation system.

MODEL GRADE FEATURES

	STANDARD	LE	SE	XLE		STANDARD	LE	SE	XLE
Exterior									
Aerodynamic multi-reflector halogen headlamps with auto on/off feature	S	S	–	S	Black power outside mirrors	S	–	–	–
Aerodynamic multi-reflector halogen headlamps with blackout sport trim and auto on/off feature	–	–	S	–	Heated outside mirrors	–	–	–	S
Integrated fog lamps	–	–	S	S	High Solar Energy-Absorbing (HSEA) glass	S	S	S	S
15-in. steel wheels with P205/65R15 tires and full wheel covers	S	S	–	–	Washer-linked variable intermittent windshield wipers with mist cycle	S	S	S	S
15-in. 5-spoke aluminum alloy wheels with P205/65R15 tires	–	0 ¹	–	–	Power tilt/slide moonroof with sliding sunshade	–	0	S	0 ¹
16-in. 5-spoke aluminum alloy wheels with P215/60R16 tires ²	–	–	0 ³	–	Color-keyed protective body side moldings	S	S	S	–
17-in. 5-spoke aluminum alloy wheels with P215/55R17 tires ²	–	–	S ⁴	–	Chrome-trimmed protective body side moldings	–	–	–	S
16-in. steel wheels with P215/60R16 tires and full wheel covers ²	–	–	S ³	S	Blackout sport grille with chrome trim	–	–	S	–
16-in. 7-spoke aluminum alloy wheels with P215/60R16 tires	–	–	–	0 ¹	Black Pearl sport badging with chrome logos	–	–	S	–
Dual color-keyed power outside mirrors	–	S	S	S	Heavy-duty electric rear window defogger with timer	S	S	S	S
					Chrome-tipped exhaust	–	–	S	–
Interior									
Tilt steering wheel with audio controls	S	S	S	S	Power automatic door locks with anti-lockout feature	S	S	S	S
Leather-wrapped steering wheel and shift lever	–	–	–	P	Defroster-linked CFC-free air conditioning with air filter	S	S	S	–
Leather-wrapped 3-spoke sport steering wheel and shift lever	–	–	S	–	Defroster-linked CFC-free automatic climate control with air filter and rear-seat vents	–	–	–	S
Hand lever parking brake	S	S	S	–	AM/FM CD player with six speakers and in-glass antenna	S	S	S	–
Foot pedal parking brake	–	–	–	S	JBL 3-in-1 AM/FM Cassette/single-disc CD player, eight speakers in six locations and FM diversity reception	–	0	0	–
Remote hood, trunk and fuel-filler door releases	S	S	S	S	JBL 3-in-1 AM/FM Cassette/6-disc in-dash CD changer with XM Satellite Radio capability, ⁸ eight speakers in six locations and FM diversity reception	–	P	P	S
Power-adjustable pedals	–	0 ⁵	0 ³	0	Touch-screen DVD navigation system ⁹ with JBL AM/FM single-disc CD player with XM Satellite Radio capability, ⁸ eight speakers in six locations and FM diversity reception	–	–	P ⁴	P ⁴
Leather seat and door trim with integrated armrests and dual front and rear map pockets	–	–	P	0 ²	Multi-information display with clock, outside temperature, instant and average fuel economy, driving range, average speed and elapsed time functions, and steering wheel-mounted controls	–	–	–	S
Unique sport fabric	–	–	S	–	Digital quartz clock with outside temperature display	S	S	S	S
Multi-adjustable front bucket seats with adjustable headrests and seatback pockets; manual driver's seat with vertical seat height adjuster and lumbar support	S	–	–	–	Two 12V auxiliary power outlets	S	S	S	S
Multi-adjustable power passenger seat ¹	–	–	–	S	Three front cup holders	S	S	S	S
Multi-adjustable power driver's seat with adjustable headrests, seatback pockets and lumbar support ⁶	–	S	S	S	Fold-down rear center armrest with dual cup holders	S	S	S	S
60/40 split fold-down rear seat with security locks, adjustable outboard headrests and seatbelt positioning clips	S	S	S	S	Multi-function remote keyless entry system with lock, unlock, trunk-release, panic features and illuminated entry	–	S	S	S
Auto-dimming electrochromic rearview mirror with compass	–	–	–	S	Optitron meters with speedometer, tachometer, coolant temperature and fuel level gauges; digital odometer and twin tripmeters	S	S	S	S
Dual illuminated visor vanity mirrors with dimmer control	–	–	–	S	Amber-colored Optitron sport meters	–	–	S	–
Overhead console with maplights and sunglasses holder	S	S	S	S	Manually retractable rear window sunshade	–	P	P	S
Illuminated entry	S	S	S	S	Trunk-mounted cargo net	–	P	P	S
HomeLink ^{®7} universal transceiver	–	–	P ⁴	S					
Metallic-style interior trim with chrome door handle accents	–	–	S	–					
Wood-grain-style interior trim with chrome accents on door handles and air vents	–	–	–	S					
Cruise control	S	S	S	S					
Power windows with driver's auto down and retained-power features	S	S	S	–					
Power windows with driver's auto up/down and retained power features with "jam protection"	–	–	–	S					

S = Standard 0 = Optional – = Not Available
P = Feature is available only as part of an option package.

- Standard on V6 models, available on 4-cylinder models.
- SE available with All-Season tires as a no-cost option.
- 4-cylinder models only.
- V6 models only.
- Automatic models only.

- Multi-adjustable power passenger seat standard on XLE.
- HomeLink[®] is a registered trademark of Johnson Controls, Inc.
- Functioning XM Satellite Radio requires XM Satellite Radio capacity, XM Satellite Radio receiver and satellite monthly service fee. See your Toyota dealer for further details.
- See Available Packages and Options section footnote 7 for more information on Toyota's touch-screen DVD navigation system.

WARRANTIES

Every Toyota Car, Truck and SUV is built to exceptional standards. And that's not idle boasting. We back it up with these Limited Warranty Coverages:

Basic: 36 months/36,000 miles (all components other than normal wear and maintenance items).

Powertrain: 60 months/60,000 miles (engine, transmission/transaxle, front-wheel drive, rear-wheel drive, seatbelts and airbags).

Rust-Through: 60 months/unlimited miles (corrosion perforation of sheet metal).

Emissions: Coverages vary under Federal and California regulations. Refer to applicable *Owner's Warranty Information* booklet for details.

Accessories: For accessories purchased at the time of the new vehicle purchase, the Toyota Accessory Warranty coverage is in effect for 36 months/36,000 miles from the vehicle's in-service

Some vehicles are shown with available equipment. Seatbelts should be worn at all times. For details on vehicle specifications, standard features and available equipment in your area, contact your Toyota dealer. A vehicle with particular equipment may not be available at the dealership. Ask your Toyota dealer to help locate a specifically

equipped vehicle. All information presented herein is based on data available at the time of posting, is subject to change without notice and pertains specifically to mainland U.S.A. vehicles only (may differ in the state of Hawaii, Puerto Rico, the U.S. Virgin Islands and in other regions).

date, which is the same coverage as the Toyota New Vehicle Limited Warranty. For accessories purchased after the new vehicle purchase the coverage is 12 months, regardless of mileage, from the date the accessory was installed on the vehicle, or the remainder of any applicable new vehicle warranty, whichever provides greater coverage, with the exception of car covers. Car covers are warranted for 12 months from the date of purchase and do not assume any coverage under the Toyota New Vehicle Limited Warranty.

You may be eligible for transportation assistance if it's necessary that your vehicle be kept overnight for repairs covered under warranty. Please see your authorized Toyota dealership for further details. For complete details about Toyota's warranties, please visit www.toyota.com, refer to the applicable *Owner's Warranty Information* booklet or see your Toyota dealer.

MODEL GRADE FEATURES

	STANDARD	LE	SE	XLE	STANDARD	LE	SE	XLE
Safety and Convenience								
Driver and front passenger Advanced Airbag System ^{1,2}	S	S	S	S	S	S	S	S
Driver and front passenger seat-mounted side airbags and front and rear side curtain airbags ²	0	0	0	0	S	S	S	S
3-point front outboard seatbelts with adjustable shoulder anchors and driver-side Emergency Locking Retractor (ELR), front passenger Automatic/Emergency Locking Retractor (ALR/ELR)	S	S	S	S	S	S	S	S
3-point rear seatbelts with Automatic/Emergency Locking Retractors (ALR/ELR) for all passengers	S	S	S	S	S	S	S	S
Outboard rear seatbelt comfort guides	S	S	S	S	S	S	S	S
Front and rear crumple zones and side-impact door beams	S	S	S	S	S	S	S	S
Anti-lock Brake System (ABS) with Electronic Brake-force Distribution (EBD)	S	S	S	S	S	S	S	S
Vehicle Stability Control (VSC) ³ with Traction Control (TRAC) and Brake Assist ⁴	–	P	P	P	S	S	S	S
Energy-absorbing collapsible steering column	S	S	S	S	S	S	S	S
Child-protector rear door locks	S	S	S	S	S	S	S	S
Rear-seat Child Restraint System (CRS) lower anchors and top tether brackets (LATCH)	S	S	S	S	S	S	S	S
Internal trunk-release handle	S	S	S	S	S	S	S	S
Battery-saver feature — deactivates interior lights after 30 minutes	S	S	S	S	S	S	S	S
Daytime Running Lights (DRL)	S	S	S	S	S	S	S	S
Engine immobilizer	–	S ⁵	S ⁵	–	–	–	–	–
Anti-theft system with engine immobilizer and alarm	–	–	–	S	–	–	–	S

S = Standard 0 = Optional – = Not Available
P = Feature is available only as part of an option package.

AVAILABLE PACKAGES AND OPTIONS
Standard Packages

None

LE Packages

Convenience Plus Package B — includes JBL 3-in-1 AM/FM Cassette/6-disc in-dash CD changer with XM Satellite Radio capability,⁶ eight speakers in six locations and FM diversity reception; manually retractable rear sunshade; trunk-mounted cargo net; and power tilt/slide moonroof with sliding sunshade

VSC and Side Airbag Package — includes Vehicle Stability Control (VSC)³ with Traction Control (TRAC) and Brake Assist,⁴ and driver and front passenger front seat-mounted side airbags and front and rear side curtain airbags²

SE Packages

Convenience Plus Package B — includes JBL 3-in-1 AM/FM Cassette/6-disc in-dash CD changer with XM Satellite Radio capability,⁶ eight speakers in six locations and FM diversity reception; manually retractable rear sunshade; and trunk-mounted cargo net

SE Premium Package — includes perforated leather-trimmed interior; JBL 3-in-1 AM/FM Cassette/6-disc in-dash CD changer, XM Satellite Radio capability,⁶ eight speakers in six locations and FM diversity reception; manually retractable rear sunshade; and trunk-mounted cargo net

SE Navigation Package⁵ — includes perforated leather-trimmed interior; touch-screen DVD navigation system⁷ with JBL AM/FM single-disc CD player, XM Satellite Radio capability,⁶ eight speakers in six locations and FM diversity reception; HomeLink[®] universal transceiver; manually retractable rear sunshade; and trunk-mounted cargo net (V6 only)

VSC and Side Airbag Package — includes Vehicle Stability Control (VSC)³ with Traction Control (TRAC) and Brake Assist,⁴ and driver and front passenger front seat-mounted side airbags and front and rear side curtain airbags²

XLE Packages

XLE Premium Package¹¹ — includes leather-trimmed interior¹¹ and 16-in. aluminum alloy wheels with P215/60R16 tires (4-cylinder only)

XLE Premium Plus Package¹¹ — includes leather-trimmed interior, power tilt/slide moonroof with sliding sunshade and 16-in. aluminum alloy wheels with P215/60R16 tires (4-cylinder only)

XLE Navigation Package⁵ — includes touch-screen DVD navigation system⁷ with JBL AM/FM single-disc CD player with XM Satellite Radio capability,⁶ eight speakers in six locations and FM diversity reception (V6 only)

VSC and Side Airbag Package — includes Vehicle Stability Control (VSC)³ with Traction Control (TRAC) and Brake Assist,⁴ and driver and front passenger front seat-mounted side airbags and side curtain airbags²

Options for Standard

- Driver and front passenger front seat-mounted side airbags and front and rear side curtain airbags²

Options for LE

- 15-in. 5-spoke aluminum alloy wheels with P205/65R15 tires
- Power tilt/slide moonroof with sliding sunshade
- Driver and front passenger front seat-mounted side airbags and front and rear side curtain airbags²
- Power-adjustable pedals (automatic only)
- JBL 3-in-1 AM/FM Cassette/single-disc CD player with XM Satellite Radio capability,⁶ eight speakers in six locations and FM diversity reception

Options for SE

- Color-keyed rear spoiler with integrated center stop lamp
- Unique 16-in. 5-spoke aluminum alloy wheels with P215/55R16 tires⁹ (4-cylinder only)
- Heated front seats¹⁰ (V6 only)
- Driver and front passenger front seat-mounted side airbags and front and rear side curtain airbags²
- Power-adjustable pedals (automatic only)
- JBL 3-in-1 AM/FM Cassette/single-disc CD player with XM Satellite Radio capability,⁶ eight speakers in six locations and FM diversity reception
- Vehicle Stability Control (VSC)³ with Traction Control (TRAC) and Brake Assist⁴

Options for XLE

- 16-in. 7-spoke aluminum alloy wheels with P215/60R16 tires (4-cylinder only)
- Power tilt/slide moonroof with sliding sunshade (4-cylinder only)
- Driver and front passenger front seat-mounted side airbags and side curtain airbags²
- Power-adjustable pedals
- Heated front seats¹²
- Vehicle Stability Control (VSC)³ with Traction Control (TRAC) and Brake Assist⁴

1. The Advanced Airbag System is for the driver and front passenger.
2. The Toyota driver, front passenger, front seat-mounted side airbags and side curtain airbags are Supplemental Restraint Systems (SRS). The driver and front passenger airbags are designed to deploy in severe (usually frontal) collisions where the magnitude and duration of the forward deceleration of the vehicle exceed the design threshold level. The side airbags and side curtain airbags are designed to inflate in certain types of severe side-impact collisions. In all other accidents, the airbags will not inflate. To decrease the risk of injury from a deploying airbag, always wear seatbelts, sit upright in the middle of the seat as far back as possible from the airbag modules and do not lean against the door. Do not put objects in front of an airbag or around the seatback. Do not use rearward-facing child seats in any front passenger seat. The force of a deploying SRS airbag may cause serious injury or death. Please see your Owner's Manual for further instructions.
3. Toyota Vehicle Stability Control (VSC) is an electronic system designed to help the driver maintain vehicle control under adverse conditions. It is not a substitute for safe driving practices. Factors including speed, road conditions and driver steering input can all affect whether VSC will be effective in preventing a loss of control. Please see your Owner's Manual for further details.
4. Brake Assist is designed to help the driver take full advantage of the benefits of ABS. It is not a substitute for safe driving practices. Braking effectiveness also depends on proper brake-system maintenance and tire and road conditions.

5. V6 models only.
6. Functioning XM Satellite Radio requires XM Satellite Radio capacity, XM Satellite Radio receiver and satellite monthly service fee. See your Toyota dealer for further details.
7. The Toyota DVD navigation system is designed to assist in locating an address or point of interest. Discrepancies may be encountered between the system and your actual location. Changes in street names, road closures, traffic flow or other road system changes may affect the accuracy of the mapping software. Rely upon your common sense to decide whether or not to follow a specified route. Detailed coverage not available in every city. Optional periodic geographic updates available at an additional cost. See your Navigation System Owner's Manual and your Toyota dealer for further details.
8. HomeLink[®] is a registered trademark of Johnson Controls, Inc.
9. SE available with All-Season tires as a no-cost option.
10. Requires SE Premium Package or SE Navigation Package.
11. Standard on V6 models, available on 4-cylinder models.
12. XLE 4-cylinder requires XLE Premium Package or XLE Premium Plus Package.

SPECIFICATIONS

	STANDARD	LE 4-CYL.	LE V6	SE 4-CYL.	SE V6	XLE 4-CYL.	XLE V6
Mechanical/Performance							
Engine	2.4-liter DOHC 16-valve VVT-i 4-cylinder 160 hp ¹ @ 5700 rpm 163 lb.-ft. ¹ @ 4000 rpm	2.4-liter DOHC 16-valve VVT-i 4-cylinder 160 hp ¹ @ 5700 rpm 163 lb.-ft. ¹ @ 4000 rpm	3.0-liter DOHC 24-valve VVT-i V6 210 hp @ 5800 rpm 220 lb.-ft. @ 4400 rpm	2.4-liter DOHC 16-valve VVT-i 4-cylinder 160 hp ¹ @ 5700 rpm 163 lb.-ft. ¹ @ 4000 rpm	3.3-liter DOHC 24-valve VVT-i V6 225 hp @ 5600 rpm 240 lb.-ft. @ 3600 rpm	2.4-liter DOHC 16-valve VVT-i 4-cylinder 160 hp ¹ @ 5700 rpm 163 lb.-ft. ¹ @ 4000 rpm	3.0-liter DOHC 24-valve VVT-i V6 210 hp @ 5800 rpm 220 lb.-ft. @ 4400 rpm
Ignition	Electronic, with Toyota Direct Ignition (TDI)						
Transmission	5-speed manual overdrive 5-speed electronically controlled automatic overdrive with intelligence (ECT-i)						
Drivetrain	Front engine, front-wheel drive						
Body construction	Unitized body with front and rear vibration-dampening sub-frames						
Suspension	MacPherson strut front suspension with gas-filled shock absorbers and stabilizer bar; dual-link independent MacPherson strut rear suspension with gas-filled shock absorbers and stabilizer bar (SE adds sport-tuned shock absorbers, springs and strut tower brace)						
Steering	Variable-assist power rack-and-pinion						
Turning circle diameter, curb to curb (ft.)	34.8	34.8	34.8	36.7	36.7	36.7	36.7
Brakes	Power-assisted ventilated front/solid rear disc (power-assisted front ventilated disc/rear drum on LE 4-cylinder and Standard)						
4-channel 3-sensor Anti-lock Brake System (ABS) with Electronic Brake-force Distribution (EBD)	Standard	Standard	Standard	Standard	Standard	Standard	Standard
Vehicle Stability Control (VSC) ² with Traction Control (TRAC) and Brake Assist ³	NA	Available	Available	Available	Available	Available	Available
Exterior Dimensions (in.)							
Overall height, unloaded	58.7	58.7	58.7	58.7	58.7	58.7	58.7
Overall width	70.7	70.7	70.7	70.7	70.7	70.7	70.7
Overall length	189.2	189.2	189.2	189.2	189.2	189.2	189.2
Wheelbase	107.1	107.1	107.1	107.1	107.1	107.1	107.1
Ground clearance	5.5	5.5	5.5	5.9	5.9	5.9	5.9
Track (front/rear)	60.8/60.4	60.8/60.4	60.8/60.4	60.8/60.4	60.8/60.4	60.8/60.4	60.8/60.4
Coefficient of drag (Cd)	0.28	0.28	0.28	0.28	0.28	0.28	0.28
Interior Dimensions front/rear (in.)							
Head room	39.2/38.4	39.2/38.4	39.2/38.4	39.2/38.4	39.2/38.4	39.2/38.4	39.2/38.4
Shoulder room	57.5/56.7	57.5/56.7	57.5/56.7	57.5/56.7	57.5/56.7	57.5/56.7	57.5/56.7
Hip room	54.4/54.1	54.4/54.1	54.4/54.1	54.4/54.1	54.4/54.1	54.4/54.1	54.4/54.1
Leg room	41.6/37.8	41.6/37.8	41.6/37.8	41.6/37.8	41.6/37.8	41.6/37.8	41.6/37.8
Seating capacity	5	5	5	5	5	5	5
Weights and Capacities							
Curb weight, manual/automatic (lb.)	3108/3164	3108/3164	NA/3340	3164/3219	NA/3450	NA/3241	NA/3428
EPA passenger volume (cu. ft.)	101.8	101.8	101.8	101.8	101.8	101.8	101.8
Luggage capacity, rear seatbacks up (cu. ft.)	16.7	16.7	16.7	16.7	16.7	16.7	16.7
Fuel tank (gal.)	18.5	18.5	18.5	18.5	18.5	18.5	18.5
Tires							
Size	P205/65R15	P205/65R15	P205/65R15	P215/60R16	P215/55R17	P215/60R16	P215/60R16
Type	All-Season	All-Season	All-Season	Performance ⁴	Performance ⁴	All-Season	All-Season
Spare	Temp	Full-size	Full-size	Full-size	Full-size	Full-size	Full-size
Mileage Estimates (mpg city/highway)⁵							
Manual transmission	24/33	24/33	NA	24/33	NA	NA	NA
Automatic transmission	24/34	24/34	20/28	24/34	20/29	24/34	20/28

1. In certain areas, 4-cylinder automatic models are equipped as Partial Zero Emission Vehicles (PZEV). Equipment causes nominal reduction in horsepower (from 160 hp to 151 hp) and torque (from 163 lb.-ft. to 161 lb.-ft.). For Camry 4-cylinder models certified as partial zero-emission vehicles (PZEV) that are sold, registered and operated in California, Connecticut, Maine, Massachusetts, New Hampshire, New Jersey, New York, Rhode Island or Vermont, all emissions components are covered for 15 years or 150,000 miles, whichever occurs first, for performance and defect.

2. See Available Packages and Options section footnote 3 for more information on Toyota's Vehicle Stability Control (VSC).

3. Brake Assist is designed to help the driver take full advantage of the benefits of ABS. It is not a substitute for safe driving practices. Braking effectiveness also depends on proper brake-system maintenance and tire and road conditions.

4. Performance tires are expected to experience greater tire wear than conventional tires. Tire life may be less than 24,000 miles, depending upon driving conditions. SE available with All-Season tires as a no-cost option.

5. 2005 preliminary mileage estimates determined by Toyota. EPA mileage estimates not available at time of posting. Actual mileage may vary.

TOYOTA FINANCIAL SERVICES*

Now that you're thinking about a Toyota, you may also want to consider leasing or financing the purchase of your new vehicle through your participating dealer and Toyota Financial Services (TFS). TFS offers a variety of high-quality finance and lease products to complement your lifestyle. At TFS we realize that purchasing or leasing a vehicle is a major commitment and we have developed some of the finest customer-focused finance and insurance solutions to help protect your interests over time. And in most cases, you may include your

cost for these products in your finance or lease contract. Few companies can match the expertise, customer care and total value of TFS. Ask your Toyota dealer or go to www.toyotafinancial.com for details.

*Toyota Financial Services is a service mark of Toyota Motor Credit Corporation and Toyota Motor Insurance Services, Inc. Products are available to qualified customers through your participating Toyota dealer and Toyota Financial Services.

COMBINATIONS
STANDARD


Camry MSRP Starting At¹:
 Camry Standard Manual \$18,195
 Camry Standard Automatic \$19,025



Standard standard 15-in. steel wheel with full wheel cover

LE


Camry LE Manual \$19,295
 Camry LE Automatic \$20,125
 Camry LE V6 Automatic \$22,530



LE standard 15-in. steel wheel with full wheel cover (4-cylinder)
 LE available 15-in. 5-spoke aluminum alloy wheel; standard on LE V6

SE


Camry SE Manual \$20,125
 Camry SE Automatic \$20,955
 Camry SE V6 Automatic \$23,775



SE standard 16-in. steel wheel with full wheel cover (4-cylinder)
 SE 16-in. 5-spoke aluminum alloy wheel (available 4-cylinder)
 SE V6 standard 17-in. 5-spoke aluminum alloy wheel

XLE


Camry XLE Automatic \$22,545
 Camry XLE V6 Automatic \$25,555



XLE standard 16-in. steel wheel with full wheel cover
 XLE available 16-in. 7-spoke aluminum alloy wheel; standard on XLE V6

1. 2005 Manufacturer's Suggested Retail Price, excludes the Delivery, Processing and Handling Fee of \$540 for Cars and \$565 for Trucks, Vans and SUVs. (Historically, vehicle manufacturers and distributors have charged a separate fee for processing, handling and delivering vehicles to dealerships. Toyota's charge for these services is called the "Delivery, Processing and Handling Fee" and is based on the value of the processing, handling and delivery services Toyota provides as well as Toyota's overall pricing structure. Toyota may make a profit on the Delivery, Processing and Handling Fee.) Excludes taxes, license, title and available or regionally required equipment. The Delivery, Processing and Handling Fee in AL, FL, GA, NC and SC is \$35 higher for Trucks, Sienna and SUVs, and \$50 higher for all other Toyota vehicles. The Delivery, Processing and Handling Fee in AR, LA, MS, OK and TX is \$35 higher for all Toyota vehicles. Actual dealer price may vary. Pricing, specifications, standard features and available equipment are based on information available when this page was produced and are subject to change without notice.

FABRIC

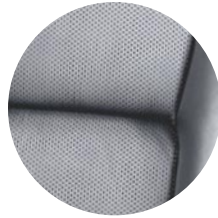

Standard fabric in Stone or Taupe (shown)



LE fabric in Taupe or Stone (shown)



SE sport fabric in Charcoal or Taupe (shown)



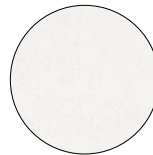
Available SE sport leather in Taupe or Charcoal (shown)



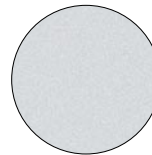
XLE fabric in Taupe or Stone (shown)



Available XLE leather in Stone or Taupe (shown)

COLOR


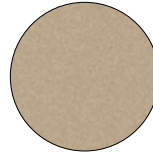
Super White² with Stone or Taupe (LE and XLE) or Charcoal or Taupe (SE) interior



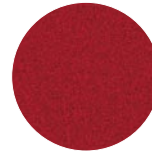
Lunar Mist Metallic with Stone (Standard, LE and XLE) or Charcoal (SE) interior



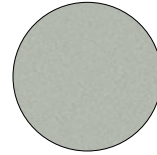
Phantom Gray Pearl with Stone or Taupe³ (Standard, LE and XLE) or Charcoal or Taupe (SE) interior



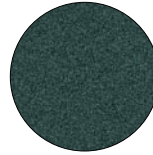
Desert Sand Mica with Taupe (Standard, LE, SE and XLE) interior



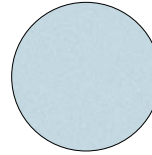
Salsa Red Pearl² with Stone or Taupe (LE and XLE) or Charcoal or Taupe (SE) interior



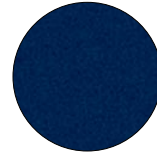
Mineral Green Opalescent² with Stone or Taupe (LE and XLE) or Charcoal or Taupe (SE) interior



Aspen Green Pearl² with Stone or Taupe (LE and XLE) or Charcoal or Taupe (SE) interior



Sky Blue Pearl² with Stone (LE and XLE) or Charcoal (SE) interior



Indigo Ink Pearl² with Stone or Taupe (LE and XLE) or Charcoal or Taupe (SE) interior



Black with Stone or Taupe³ (Standard, LE and XLE) or Charcoal or Taupe (SE) interior

2. Not available on Standard.
 3. Taupe not available on Standard.



For Toyota Mobility program details, go to www.toyota.com/mobility or call the Toyota Customer Assistance Center at 1-800-331-4331.

1-800-60-TOYOTA

toyota.com

©2004 Toyota Motor Sales, U.S.A., Inc.
 KZ5-070



A



B



C



D



E



F



G

05 ACCESSORIES

- A Premium License Plate Frames**
Accessorize your vehicle with a high-quality license frame. Available in 24kt gold, chrome and black pearl finishes.
- B Sport Pedals by OBX Racing Sport®**
Replace your drab stock pedals with a set of Sport Pedals by OBX Racing. Available in sleek silver finish for automatic and manual transmission.
- C Subwoofer**
Enhance your existing audio with the rich bass sound of a compact Subwoofer. Features 80-watt amplifier and convenient under-seat installation.
- D Exhaust Tip by Valor**
Stainless-steel Exhaust Tips by Valor Manufacturing Inc. are made of Polished 304 stainless steel and install easily with a single bolt installation. No drilling, cutting or welding required.

- E Rear Spoiler**
Turn your family car into a sports car with a Genuine Toyota Rear Spoiler. Our spoilers are aerodynamic and color-keyed for a sporty, integrated appearance.
- F Wheel Locks**
Wheels can make the vehicle. Keep your wheels where you need them — on your car.
- G Shift Knobs by OBX Racing Sports®**
Black knobs not your style? Get tech with these carbon fiber-sleeved sport Shift Knobs by OBX Racing. Available in Chrome, Titanium, Red and Blue. Manual transmission only.


H

I

J

K

L

05 ACCESSORIES

H All-Weather Floor Mats

Made with heavy-gauge rubber, these floor mats are easy to rinse clean and provide the ultimate protection for your original carpet. All-Weather Floor Mats handle all types of weather.

I Cargo Tote

This handy Cargo Tote helps keep your trunk organized.

J Auto-Dimming Mirror (standard on XLE)

Improve your driving safety with an Auto-Dimming Mirror. Its built-in sensors detect headlight glare and automatically dim the mirror to reduce eyestrain. Mirror is enhanced with a digital compass feature, which provides directional information.

K Vehicle Intrusion Protection (VIP) RS3200 Plus Security System (LE and SE)¹

This advanced multi-featured security system helps protect against theft. Your insurance deductible may be reimbursed if your vehicle is stolen.

Specific terms and conditions apply. Please consult VIP Consumer Limited Warranty Card or call TMS Commercial Insurance Department at (888) 238-8125.

L Ground Effects Kit

Enhance the sleek, sporty lines of your Camry SE with an aggressive Genuine Toyota Ground Effects Kit. The kit is color-keyed to the vehicle and contains a two-piece front air dam, side rocker panels and a rear air dam.

¹. Available for vehicles with factory remote keyless entry system.



M 15-in. contoured alloy wheel – Chrome Paint



15-in. contoured alloy wheel – Painted



N



O



P



R



Q

05 ACCESSORIES

M Alloy Wheels

Add some flair to your vehicle with sporty and stylish Alloy Wheels. Manufactured to meet Toyota's strict engineering specifications. Available in chrome-like paint and painted finishes. Various styles available in 15-in., 16-in., and 17-in. sizes.

N Molded Wood Dash Appliqué

An elegant simulated wood dash enhances the look of your vehicle's interior. A special UV coating protects the dash from cracking and fading.

O Xtreme Cargo Mat by Nifty Products

Protect your vehicle's original carpet with the Xtreme Mat. Rubberized slip-resistant surface is designed to minimize cargo shifting, while the molded outer edge creates a moisture barrier.

P First Aid Kit

This handy First Aid Kit puts supplies where they are needed, when they are needed. The kit contains sterile medical dressings, anti-bacterial ointment and an assortment of other supplies.

Q Moonroof Wind Deflector

The Moonroof Wind Deflector allows you to feel the warm sun on your face without the wind in your hair.

R Emergency Assistance Kit

Drive with confidence in knowing that you are secure with your Emergency Assistance Kit. This basic emergency assistance kit contains jumper cables, multi-tool, flashlight, emergency blanket, duct tape, bungee cord, survival whistle, hose clamp and more...

Accessories not shown:

- Glass Breakage Sensor (GBS)¹ (XLE Models)
- Front-end mask
- Trunk mat
- Cargo net (standard on XLE)
- Trunk-mounted 6-disc CD changer
- Simulated Carbon Fiber Molded Dash by Superior Dash
- Carpeted Floor Mats

See your dealer for complete warranty details. Toyota reserves the right to make modifications to actual products.

1. Available for vehicles with factory security system.